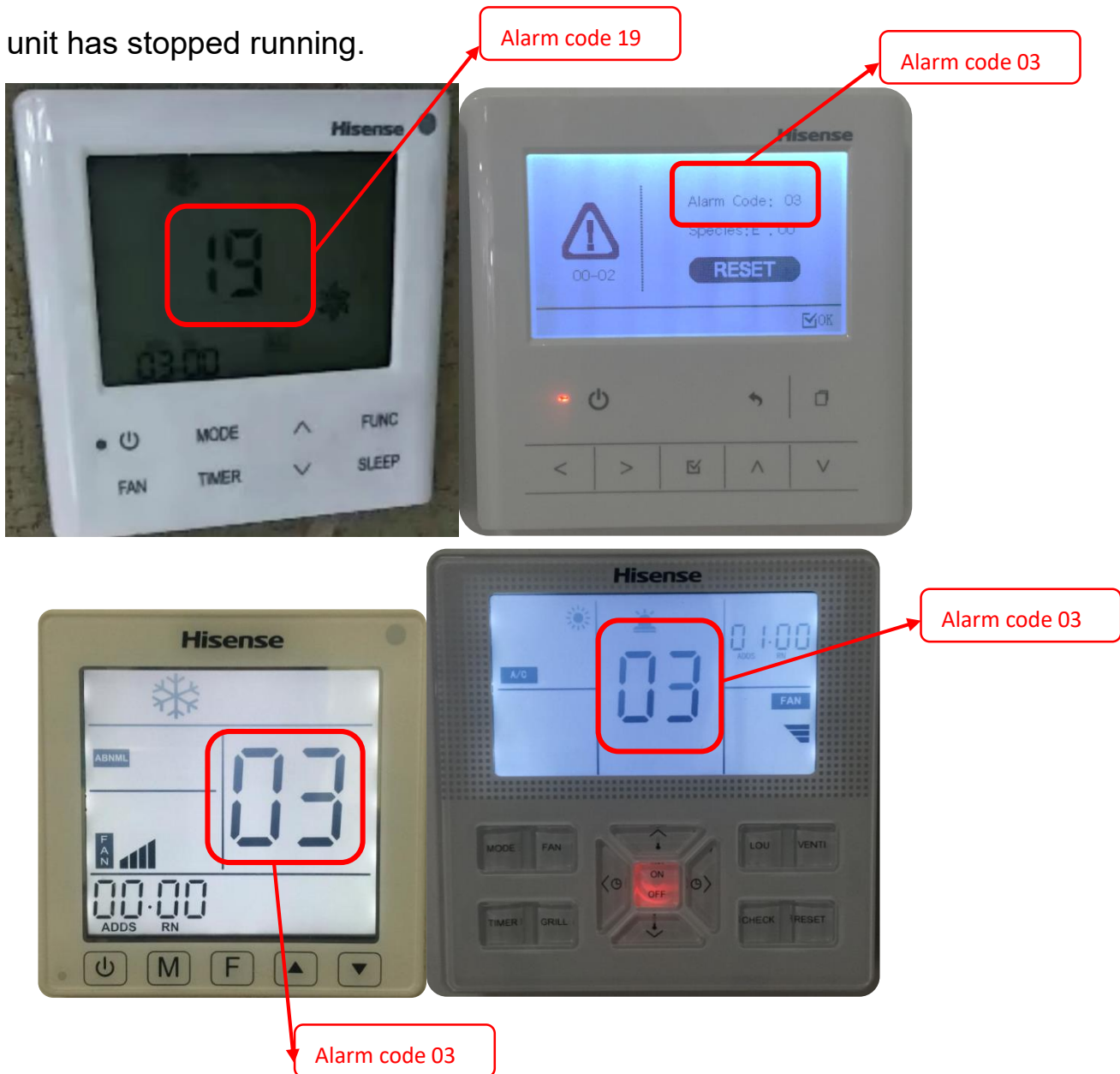


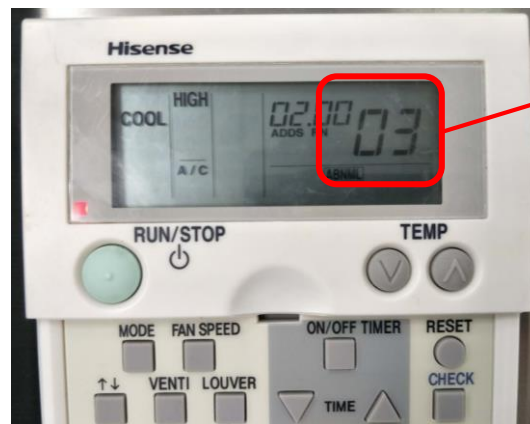
## How to identify the unit alarm code

- Indoor unit

- Form the remote controller

You can get the alarm code from the remote controller, at the same time, the indoor unit has stopped running.





Alarm code 03

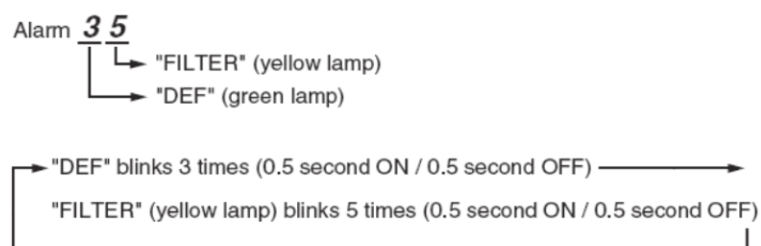
## ➤ The wireless receiver

You can get the alarm code from the wireless receiver, at the same time, the indoor unit has stopped running with the “DEF” and “FILTER” lights flashing.

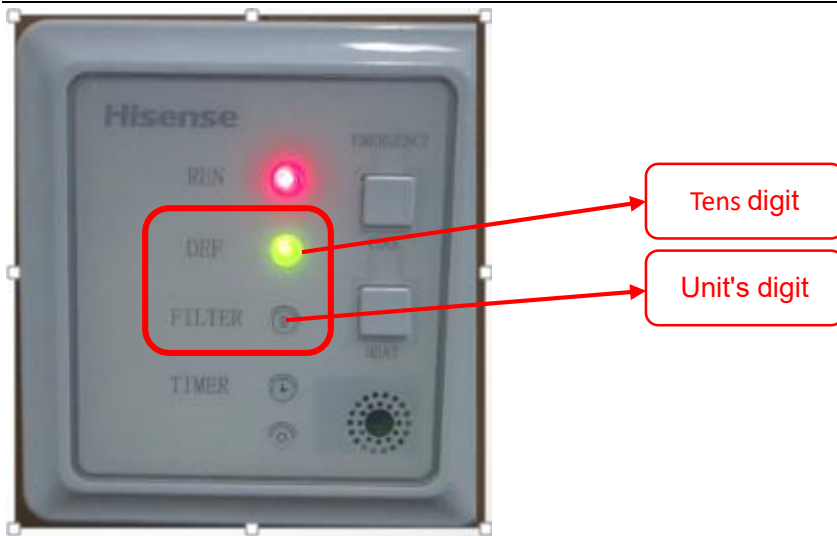
### Alarm Code Indication

- In case that some trouble occurs because of activation of safety device, etc., “RUN” (red lamp) blinks (0.5 second ON / 0.5 second OFF).
- Refer to the Installation Manual for outdoor unit about Alarm Code List.
- Alarm Code indicates the blinking times of “DEF” (green lamp) and “FILTER” (yellow lamp) as shown below.
  - “DEF” (green lamp): The blinking is shown at the 2 digit of Alarm Code
  - “FILTER” (yellow lamp): The blinking is shown at the 1 digit of Alarm Code (Alphabet Code: A=10 times, B=11 times, C=12 times, ....)

### - Example -



- “Run” (red lamp) blinking (1 second ON / 1 second OFF) indicates abnormal transmitting between Indoor Units and Outdoor Unit.



Ceiling & Floor Type



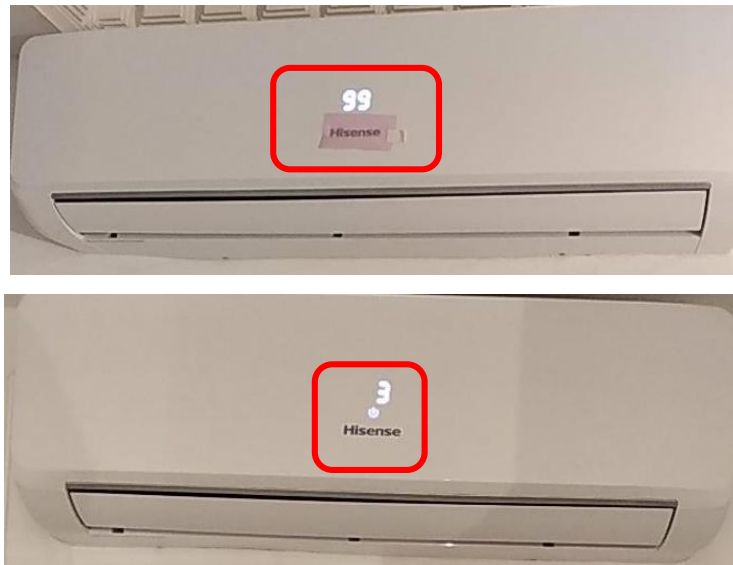
Compact 4-Way Cassette



## ➤ The panel

You can get the alarm code from the panel, at the same time, the indoor unit

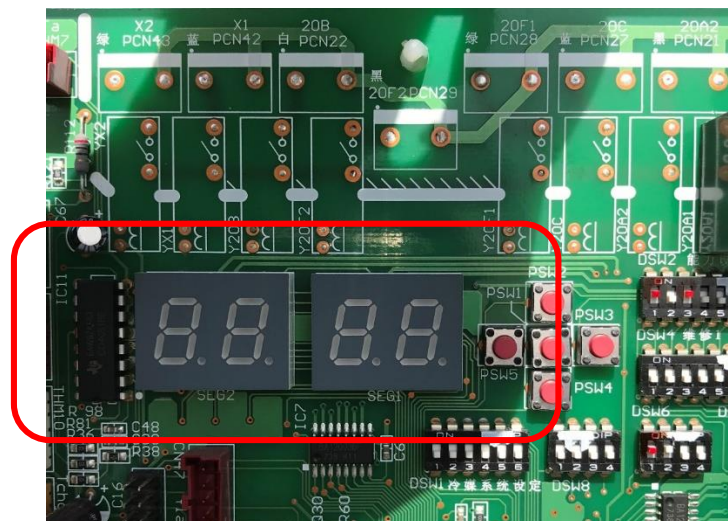
has stopped running.



- Outdoor unit

You can get the alarm code from the 7-Segments LED display, at the same time, the outdoor unit has stopped running.

## 7 Segments



Alarm code 31



Alarm code 04



▪ For Fan

Alarm code 04.



For address

For Alarm Code :01